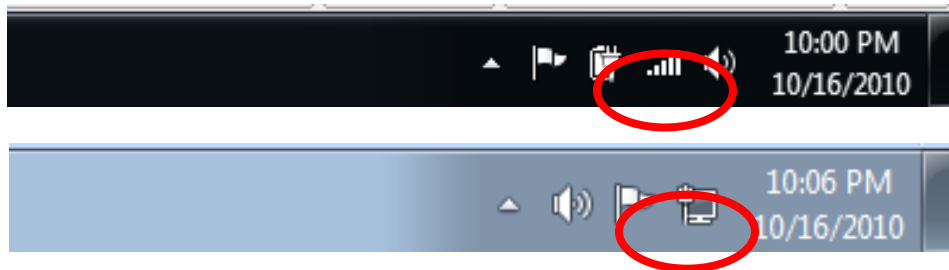
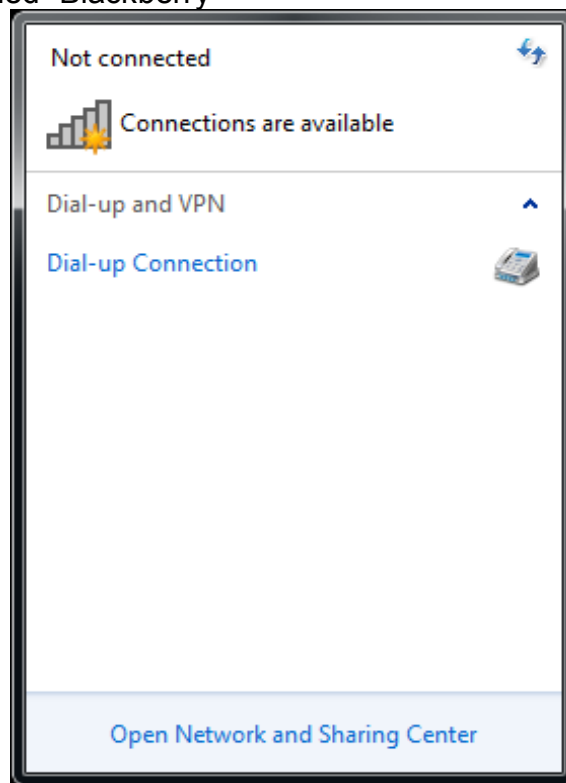


## Blackberry Tethering (TMobile)

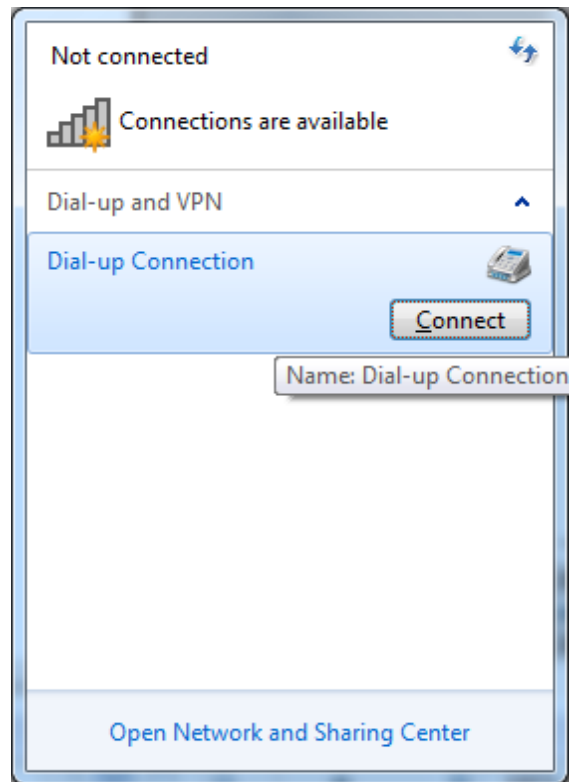
- 1) Open your Blackberry Desktop Manager, either by clicking on the desktop icon, or by finding it in your All Programs list.
- 2) Left Click on your “connections” icon – it will look like one of these two icons.



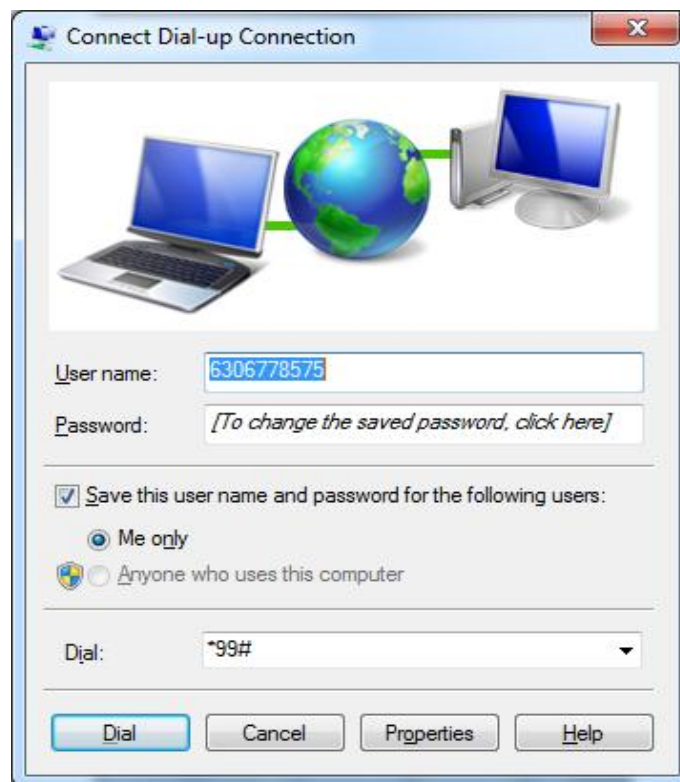
- 3) It will display your list of available connections, mine is named “Dial-up Connection”, but yours is named “Blackberry”



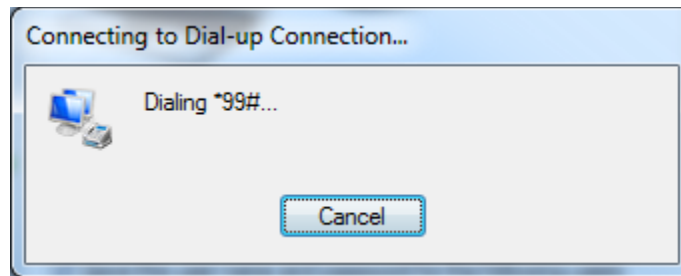
- 4) Left Click on the group of words that name the connection, it will drop down an box with a “connect” box:



- 5) Left Click on the “Connect” button, it will bring up the “Dial Up Connection” Box:



- 6) Enter your T-Mobile phone number in the User name box & your t-mobile account admin password in the password box. Use \*99# as the number. Left Click on Dial.
- 7) It will display a connecting screen



- 8) It will disappear and the connections icon will show that the "Blackberry" connection is connected.

